



# TIIG

INJURY SURVEILLANCE IN THE NORTH WEST OF ENGLAND

## Injury attendances to North Manchester General Hospital Emergency Department

### April 2013 to March 2014

This report summarises recorded injury attendances to North Manchester General Hospital Emergency Department (ED) between April 2013 and March 2014.

Between April 2013 and March 2014 there were 32,647 injury attendances to North Manchester General Hospital ED. Males accounted for over half (53%) of all attendances (**Figure 1**). The month with the highest attendances was July (n=3,312), with November (n=2,386) having the lowest attendances. The majority (60%) of attendances were recorded as other injury. Of the specified injury groups, falls (23%) accounted for the highest proportion followed by road traffic collisions (RTCs) (6%) and assaults (5%) (**Table 1**).

For all injuries the highest proportion of attendances were for persons aged 5 to 19 (25%) and 20 to 34 years (23%) (**Figure 2**). Over a third (34%) of fall attendees were aged 65 or over. Over two-fifths (42%) of deliberate self-harm (DSH) attendees were aged 20 to 34 years (**Figure 3**).

**Table 2** shows the incident location of injury attendances. Over half (56%) of injuries occurred in the home. Fifteen per cent of injuries occurred in a public place with a smaller proportion occurring at an educational establishment (5%) or at work (4%). Over three quarters (77%) of deliberate self-harm (DSH)

occurred in the home and almost six in ten (59%) falls occurred in the home.

**Table 3** shows the ethnicity of attendees to North Manchester General Hospital ED. Over three-quarters (76%) were white, 7% were Pakistani and 4% were black.

The disposal of a patient can give an indication of the severity of the injuries sustained. Over six in ten (62%) attendees were discharged, almost three in ten (28%) were referred and 10% were admitted (**Table 4**). Over three quarters (76%) of RTC attendees were discharged (**Table 5**).

**Table 6** shows the arrival method of attendances at North Manchester General Hospital ED. Over seven in ten (72%) arrived by private transport while nearly a fifth (18%) arrived by ambulance.

**Table 7** presents data for assault attendances to North Manchester ED. Almost three-quarters (72%) of assault attendees were male and nearly half (45%) were aged 20 to 34 years. Over two-fifths (42%) of assaults occurred in a public place.

Figure 1: North Manchester General Hospital ED: Total injury attendances by gender and month, April 2013 to March 2014<sup>1</sup>

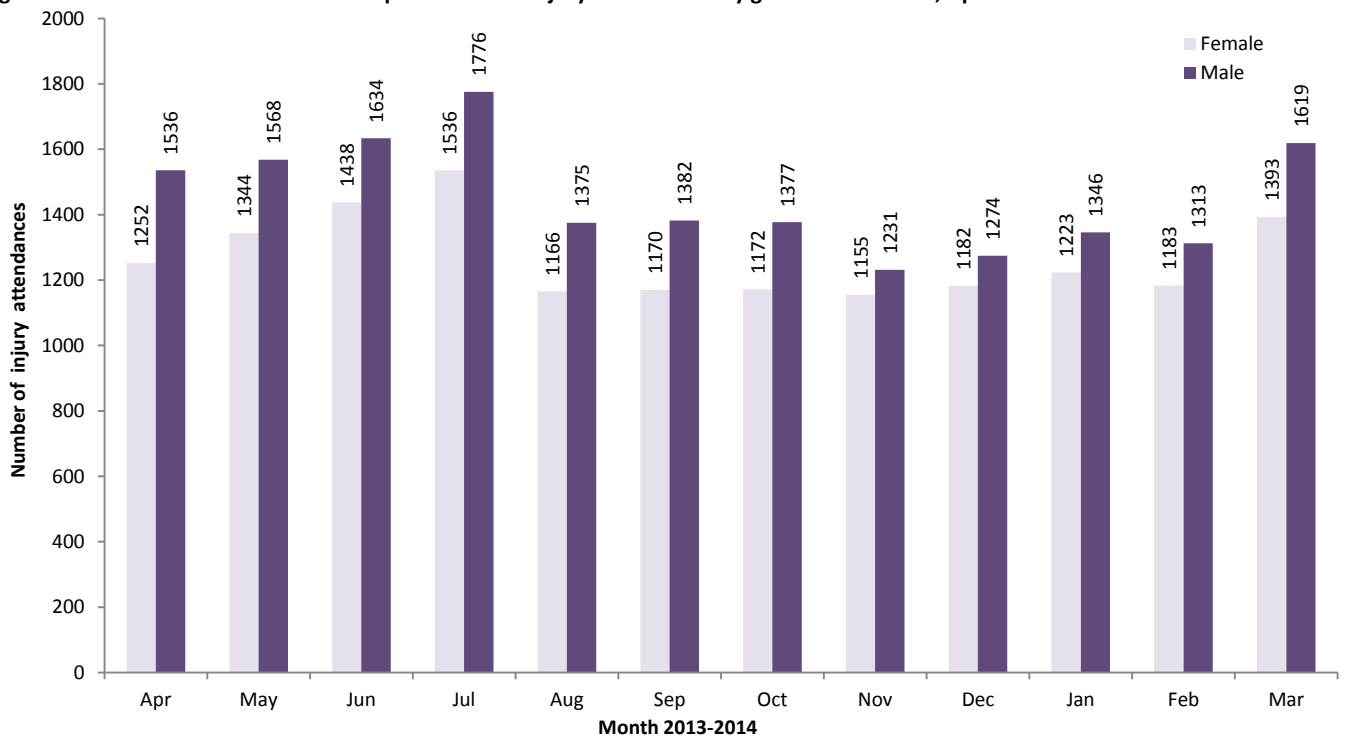
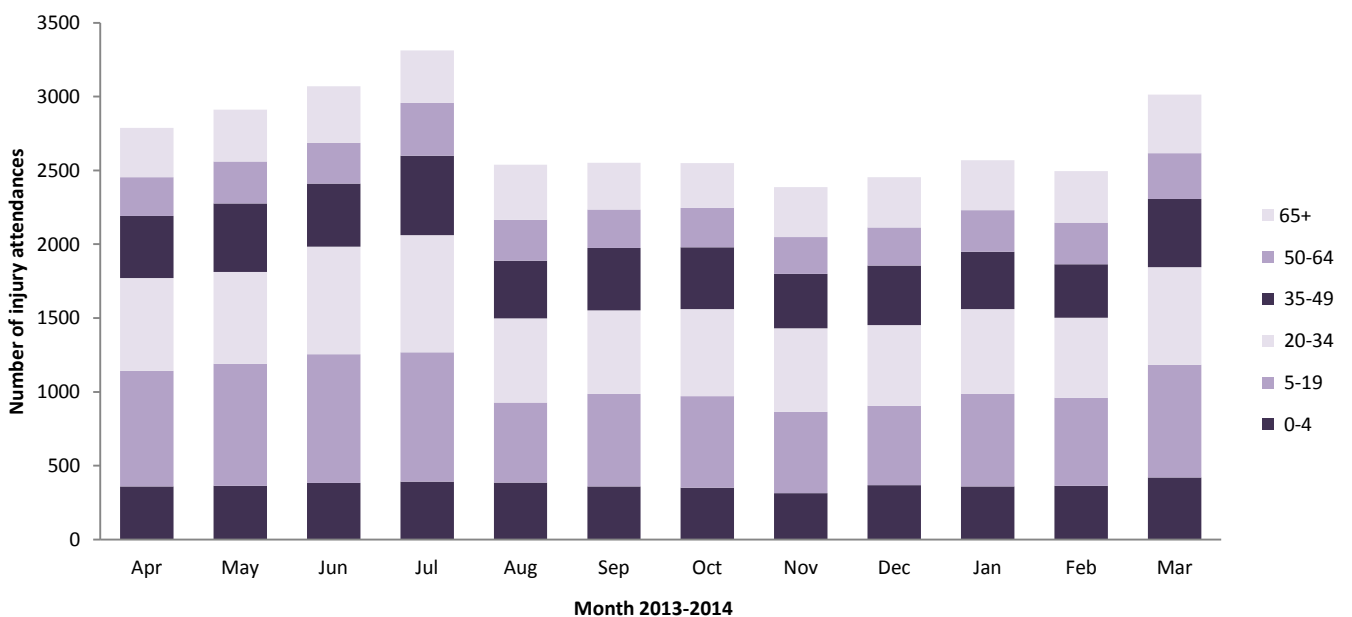


Table 1: North Manchester General Hospital ED: Total injury attendances by injury group and month, April 2013 to March 2014

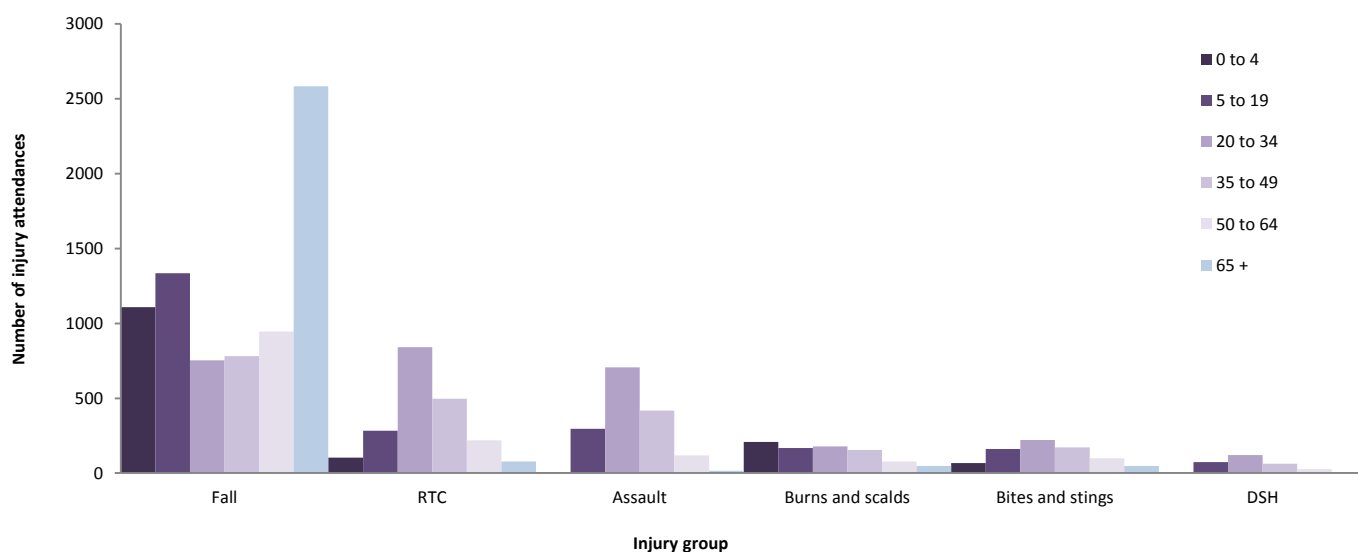
Injury group	Apr	May	Jun	Jul	Aug	Sep	Oct	Nov	Dec	Jan	Feb	Mar	Total	%
<b>Other injury</b>	1770	1825	1936	2016	1422	1426	1474	1386	1380	1580	1567	1884	19666	60
<b>Fall</b>	603	662	642	704	667	620	573	591	631	587	569	659	7508	23
<b>RTC</b>	161	145	193	177	118	203	192	180	179	157	140	176	2021	6
<b>Assault</b>	138	116	139	150	125	128	137	107	157	118	86	160	1561	5
<b>Burns and scalds</b>	56	71	64	107	83	70	81	52	55	77	69	53	838	3
<b>Bites and stings</b>	47	68	69	137	110	74	58	51	32	32	34	55	767	2
<b>DSH</b>	13	25	29	21	16	31	34	19	22	18	31	27	286	1
<b>Total</b>	2788	2912	3072	3312	2541	2552	2549	2386	2456	2569	2496	3014	32647	100

Figure 2: North Manchester General Hospital ED: Total injury attendances by age group and month, April 2013 to March 2014



<sup>1</sup> March 2014: Recorded as unknown gender (n = 2)

**Figure 3: North Manchester General Hospital ED: Total injury attendances by age group and injury group (excluding other injury), April 2013 to March 2014**



**Table 2: North Manchester General Hospital ED: Total injury attendances by location of incident and injury group, April 2013 to March 2014<sup>2</sup>**

Incident location	Assault		Bites and stings		Burns and scalds		DSH		Fall		RTC		Other		Total	
	n	%	n	%	n	%	n	%	n	%	n	%	n	%	n	%
Home	394	25	395	51	561	67	219	77	4462	59	128	6	12034	61	18193	56
Other	358	23	90	12	46	5	44	15	712	9	1794	89	2819	14	5863	18
Public place	658	42	202	26	33	4	18	6	1567	21	75	4	2286	12	4839	15
Educational establishment	43	3	7	1	7	1	***	1	380	5	***	0	1250	6	1690	5
Work	94	6	33	4	64	8	***	0	162	2	<10	0	904	5	1264	4
Not recorded	14	1	40	5	127	15	***	1	225	3	<20	1	373	2	798	2
<b>Total</b>	<b>1561</b>	<b>100</b>	<b>767</b>	<b>100</b>	<b>838</b>	<b>100</b>	<b>286</b>	<b>100</b>	<b>7508</b>	<b>100</b>	<b>2021</b>	<b>100</b>	<b>19666</b>	<b>100</b>	<b>32647</b>	<b>100</b>

**Table 3: North Manchester General Hospital ED: Total injury attendances by ethnicity and month, April 2013 to March 2014<sup>3</sup>**

Ethnicity	Apr	May	Jun	Jul	Aug	Sep	Oct	Nov	Dec	Jan	Feb	Mar	Total	%
White	2144	2245	2334	2524	1954	1900	1893	1815	1843	1964	1921	2267	24804	76
Pakistani	167	193	208	184	171	193	185	174	177	167	179	209	2207	7
Black	101	113	124	122	96	87	100	70	75	87	74	111	1160	4
Not stated	138	109	135	146	120	101	138	111	121	116	110	146	1491	5
Any other ethnic group	105	106	134	157	92	129	113	103	115	112	108	120	1394	4
Mixed	62	50	67	72	51	55	51	53	57	59	45	78	700	2
Any other Asian background	41	46	34	54	29	38	40	37	36	34	27	47	463	1
Indian	19	29	19	28	20	27	15	10	18	16	18	24	243	1
Chinese	7	15	13	17	<10	15	11	<15	9	<15	10	<15	134	0
Not recorded	***	***	***	***	***	***	***	0	***	***	***	***	30	0
Bangladeshi	***	***	***	***	0	***	***	***	***	0	***	0	21	0
<b>Total</b>	<b>2788</b>	<b>2912</b>	<b>3072</b>	<b>3312</b>	<b>2541</b>	<b>2552</b>	<b>2549</b>	<b>2386</b>	<b>2456</b>	<b>2569</b>	<b>2496</b>	<b>3014</b>	<b>32647</b>	<b>100</b>

**Table 4: North Manchester General Hospital ED: Total injury attendances by method of disposal and month, April 2013 to March 2014<sup>4</sup>**

Disposal	Apr	May	Jun	Jul	Aug	Sep	Oct	Nov	Dec	Jan	Feb	Mar	Total	%
Discharged	1718	1775	1830	2065	1587	1682	1674	1555	1469	1568	1476	1678	20077	61
Referral/follow-up	811	828	939	912	622	605	601	551	676	701	728	1001	8975	28
Admitted	230	276	253	289	280	210	216	235	272	273	268	305	3107	10
Other	29	33	50	46	52	55	58	45	39	27	24	30	488	1
<b>Total</b>	<b>2788</b>	<b>2912</b>	<b>3072</b>	<b>3312</b>	<b>2541</b>	<b>2552</b>	<b>2549</b>	<b>2386</b>	<b>2456</b>	<b>2569</b>	<b>2496</b>	<b>3014</b>	<b>32647</b>	<b>100</b>

<sup>2</sup> Please note that all numbers less than five have been suppressed in line with patient confidentiality and if there is only one number <5 in a category then two numbers will be suppressed at the next level.

<sup>3</sup> White = Irish, British, other white background; Mixed = white and black, white and Asian, mixed any other; Black = African, Caribbean, other black.

<sup>4</sup> Admitted = admitted to hospital/became a lodged patient of the same health care provider; Discharged = discharged - did not require any follow-up treatment; Referral/follow-up = discharged - follow-up treatment to be provided by GP, referred to ED clinic, referred to fracture clinic, referred to other out-patient clinic, referred to other health care professional; Other = died in department, left department before being treated, left department having refused treatment, other.

**Table 5: North Manchester General Hospital ED: Total injury attendances by method of disposal and injury group, April 2013 to March 2014<sup>4</sup>**

Disposal	Assault		Bites and stings		Burns and scalds		DSH		Fall		Other injury		RTC		Total	
	n	%	n	%	n	%	n	%	n	%	n	%	n	%	n	%
Discharged	919	59	551	72	357	43	159	56	3917	52	12647	64	1527	76	20077	61
Referral/follow-up	307	20	196	26	353	42	41	14	1792	24	5908	30	378	19	8975	27
Admitted	193	12	<20	2	101	12	<65	21	1624	22	1044	5	68	3	3107	10
Other	142	9	***	0	27	3	<30	9	175	2	67	0	48	2	488	1
<b>Total</b>	<b>1561</b>	<b>100</b>	<b>767</b>	<b>100</b>	<b>838</b>	<b>100</b>	<b>286</b>	<b>100</b>	<b>7508</b>	<b>100</b>	<b>19666</b>	<b>100</b>	<b>2021</b>	<b>100</b>	<b>32647</b>	<b>100</b>

**Table 6: North Manchester General Hospital ED: Total injury attendances by mode of arrival and month, April 2013 to March 2014<sup>4</sup>**

Arrival mode	Apr	May	Jun	Jul	Aug	Sep	Oct	Nov	Dec	Jan	Feb	Mar	Total	%
Private transport	2038	2121	2244	2459	1769	1836	1847	1686	1699	1781	1790	2080	23350	72
Ambulance	471	515	557	520	488	460	448	476	520	475	462	513	5905	18
Other	95	78	76	123	94	58	77	66	80	103	73	116	1039	3
Not recorded	61	62	65	80	59	59	45	56	27	51	47	45	657	2
Taxi	38	33	54	38	61	68	43	37	57	59	41	85	614	2
Foot	27	38	32	42	27	31	37	23	27	40	26	115	465	1
Public transport	34	36	28	30	27	23	31	26	24	43	36	35	373	1
Police	17	<30	<15	<20	16	<20	21	<20	<25	<20	<20	<25	215	1
Work transport	7	***	***	***	0	***	0	***	***	***	***	***	29	0
<b>Total</b>	<b>2788</b>	<b>2912</b>	<b>3072</b>	<b>3312</b>	<b>2541</b>	<b>2552</b>	<b>2549</b>	<b>2386</b>	<b>2456</b>	<b>2569</b>	<b>2496</b>	<b>3014</b>	<b>32647</b>	<b>100</b>

**Table 7: North Manchester General Hospital ED: Total injury attendances and assault attendances by gender, incident location, and age group, April 2013 to March 2014**

	Assaults (n=1,561)	All injuries (n=32,647)
<b>Gender</b>	%	%
Female	28	47
Male	72	53
<b>Location</b>		
Public place	42	15
Home	25	56
Other	23	18
Work	6	4
Educational establishment	3	5
Not recorded	1	2
<b>Age group</b>		
0 - 4	0	14
5 - 19	19	25
20 - 34	45	23
35 - 49	27	16
50 - 64	8	10
65 plus	1	13

Published May 2014  
 Stuart Cole (TIIG researcher)  
 Centre for Public Health, Faculty of Education, Health and Community, Liverpool John Moores University  
 2<sup>nd</sup> Floor, Henry Cotton Campus, 15-21 Webster Street, Liverpool, L3 2ET  
 Contact: Jennifer Brizell, Tel: 0151 231 4500, Email: [j.s.brizell@ljmu.ac.uk](mailto:j.s.brizell@ljmu.ac.uk)  
 Website: [www.tiig.info](http://www.tiig.info) (please note all data requests should be made through the TIIG website)  
 Twitter: @TIIG\_CPH

<sup>4</sup> Please note that all numbers less than five have been suppressed in line with patient confidentiality and if there is only one number <5 in a category then two numbers will be suppressed at the next level.